

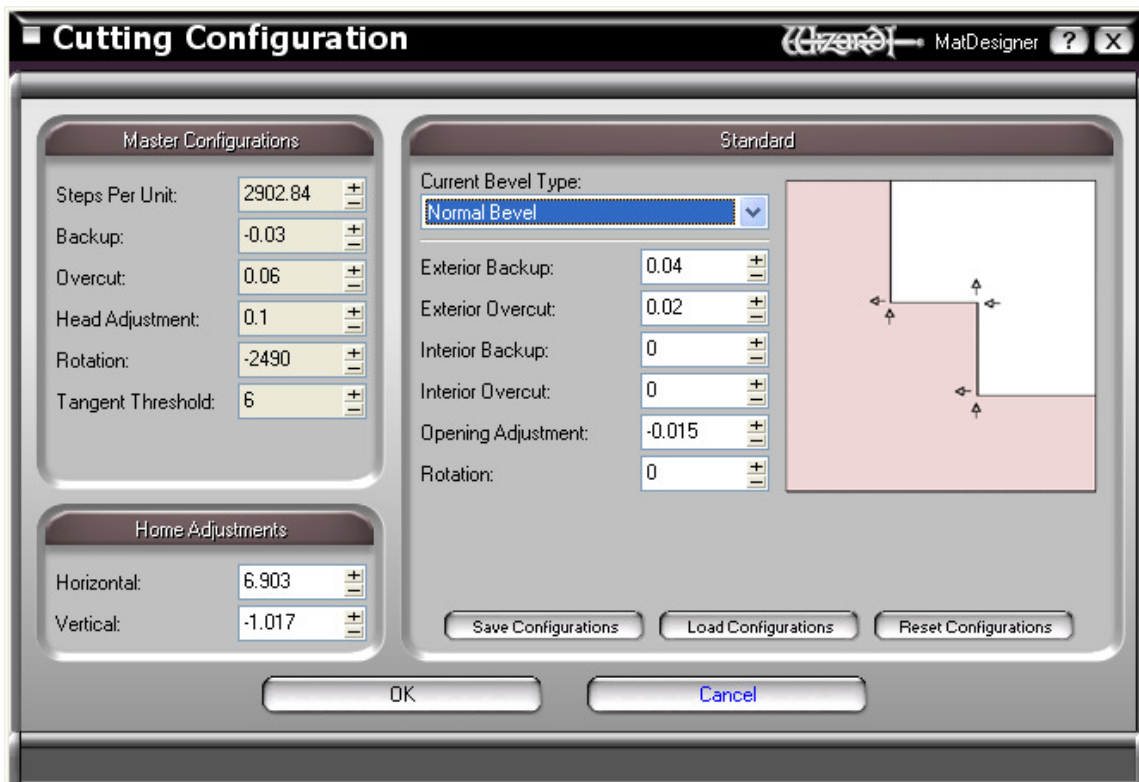
Wizard Mat Designer Board Configurations

Start the Wizard Mat Designer software.

On the menu bar at the top of the window click on "Options". Then on the drop down menu that appears, click on "Board Configurations".



The following window will appear.



Master Configurations:

Calibrate your Eclipse® using the Eclipse CUT software.

- From Eclipse CUT | Setup | Settings | Tools tab collect the Blade Offset number.
- From Eclipse CUT | Setup | Settings | Centering tab collect the X Position and Y Position numbers.
- From Eclipse CUT | Setup | Settings | Overcuts tab collect all overcut settings.
- From Eclipse CUT | Setup | Settings | Hook tab collect the number from the Hook Correction box.
- From Eclipse CUT | Setup | Machine Settings | Axis tab collect the XYPitch number.

Start the Wixard® Mat Designer® software.

Place your mouse pointer directly on top of the words “Master Configurations”. Double-click. A password dialog box will appear. The password is wizsup. Once the password has been entered you will be able to change the settings in this area.

Steps per Unit = $4000 / \text{XYPitch from Eclipse} * 25.4$

Set Backup and Overcut both to -0.06

Head Adjustment = $\text{Blade Offset from Eclipse} / \text{Steps per Unit from above}$.

Rotation = Eclipse Hook Correction

Leave Tangent Threshold at 6.

Home Adjustments:

The Home Adjustments can be calculated using the X Positions and Y Position settings found on the Centering tab in the Eclipse CUT software. Use the following formula:

For Eclipse PRO machines:

Horizontal = $-1 * \text{X Position} / 4000 * 35 / 25.4$

Vertical = $-1 * \text{Y Position} / 4000 * 35 / 25.4$

For Eclipse XL machines:

Horizontal = $-1 * \text{X Position} / 2000 * 35 / 25.4$

Vertical = $-1 * \text{Y Position} / 2000 * 35 / 25.4$

Horizontal should be close 7” +/- 0.125 and Vertical should be close to -1” +/- 0.125”.

Standard:

Wizard to Eclipse translation:

Current Bevel Type drop down menu -

“Normal Bevel” = “Cut From Back, Regular Bevel”

“Reverse Bevel” = “Cut From Back, Reverse Bevel”

“V-groove” = “V-groove”

“Outside” = Cut Frame Size, Cut From Back”

The rest of the choices are not that important.

Settings under each Bevel Type -

“Exterior Backup” = “Right-turn Reverse(Entry)” Overcuts

“Exterior Overcut” = “Right-turn Forward(Exit)” Overcuts

“Interior Backup” = “Left-turn Reverse(Entry)” Overcuts

“Interior Backup” = “Left-turn Forward(Exit)” Overcuts

“Opening Adjustment” = “Tool Offset”

“Rotation” = “Hook Correction”

You can “Save Configurations” in the Wizard Software like saving profiles in the Eclipse Software. For example: calibrate and save a 4-ply, 6-ply, and 8-ply profile.