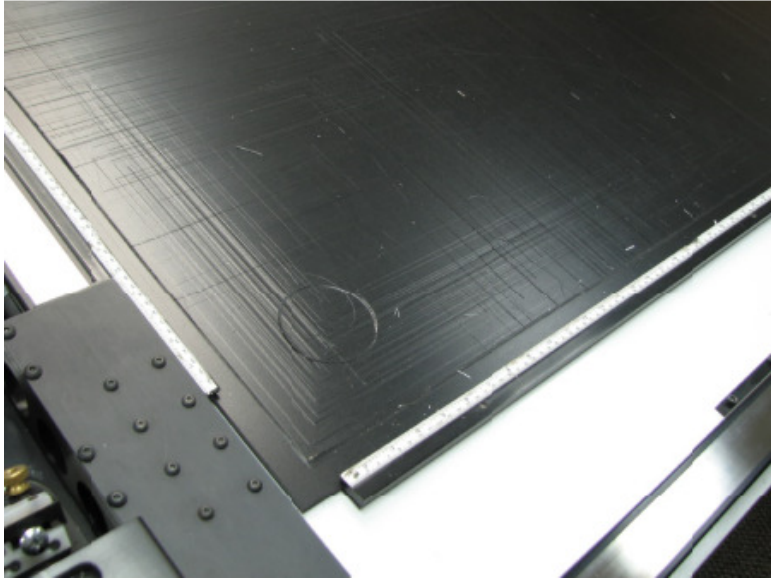


# Eclipse: Sintra Replacement

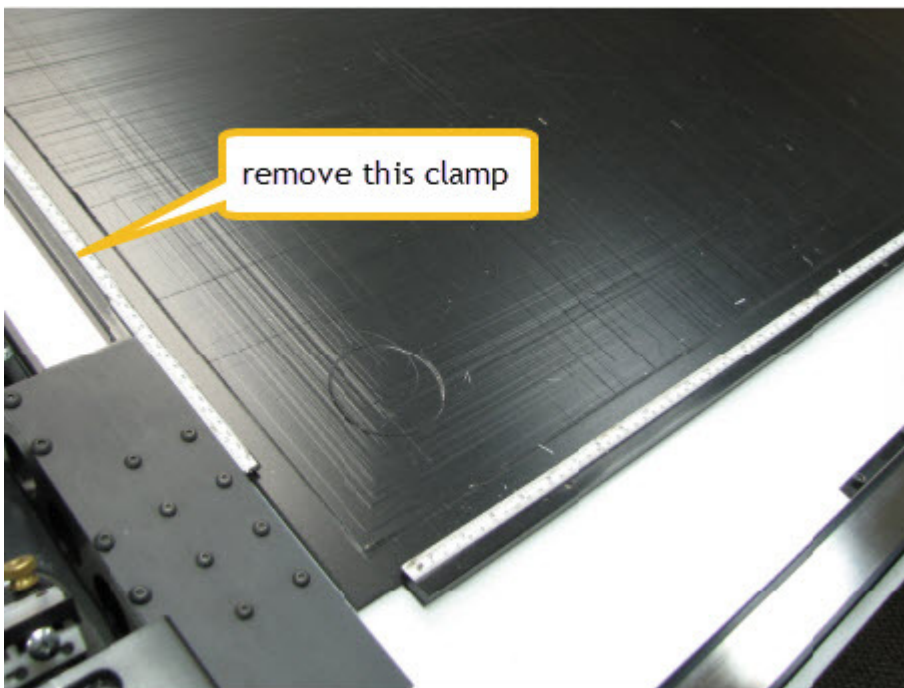
---

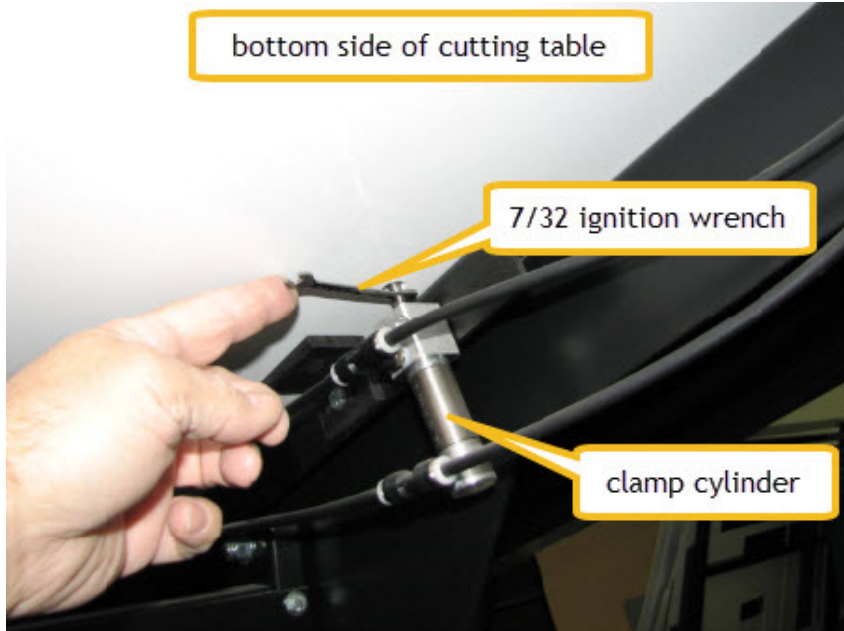
Damaged Sintra should be replaced.



Step 1:

Remove the vertical mat clamp from the machine by unscrewing the clamp cylinder rods from the underside of the table. You may need to use a heat gun from the top of the clamp to soften the Loctite in the threaded holes.





You will need to use a 7/32 ignition wrench on the wrench flats machined into the cylinder rod. Ignition wrenches are thinner than standard wrenches. Remember – lefty loosy, righty tighty. You may need to loosen it a little and then tighten it a little and repeat until the rod will unscrew easily. The heat gun is your friend. New rulers are available if you melt one. Try not to damage the painted surface of the table.



7/32 Ignition Wrench, available at Sears or MCS Direct, etc.

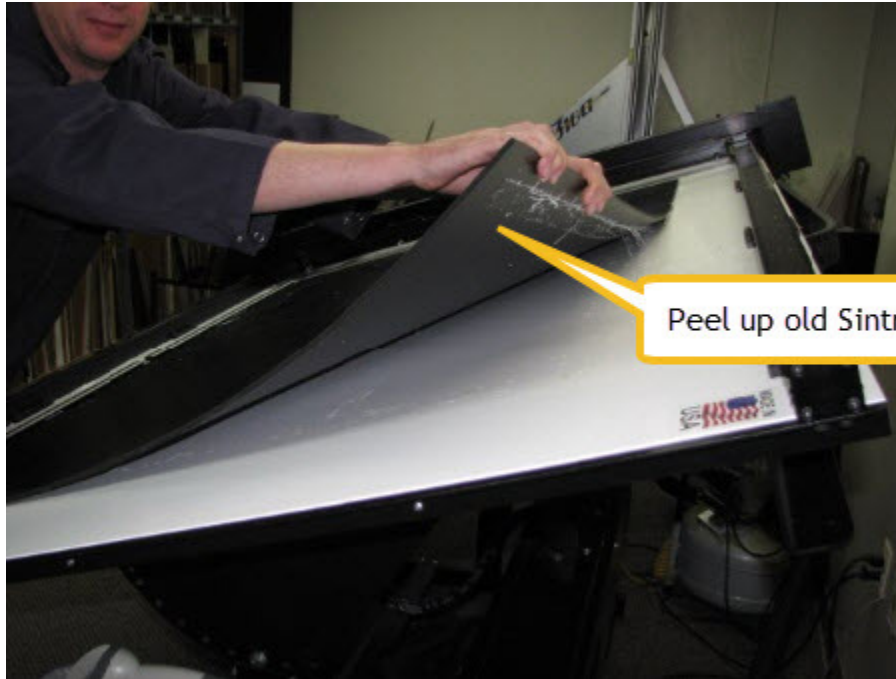
Step 2:

Place tape on the table top along the edges of the damaged Sintra to use as a guide when placing the new Sintra.



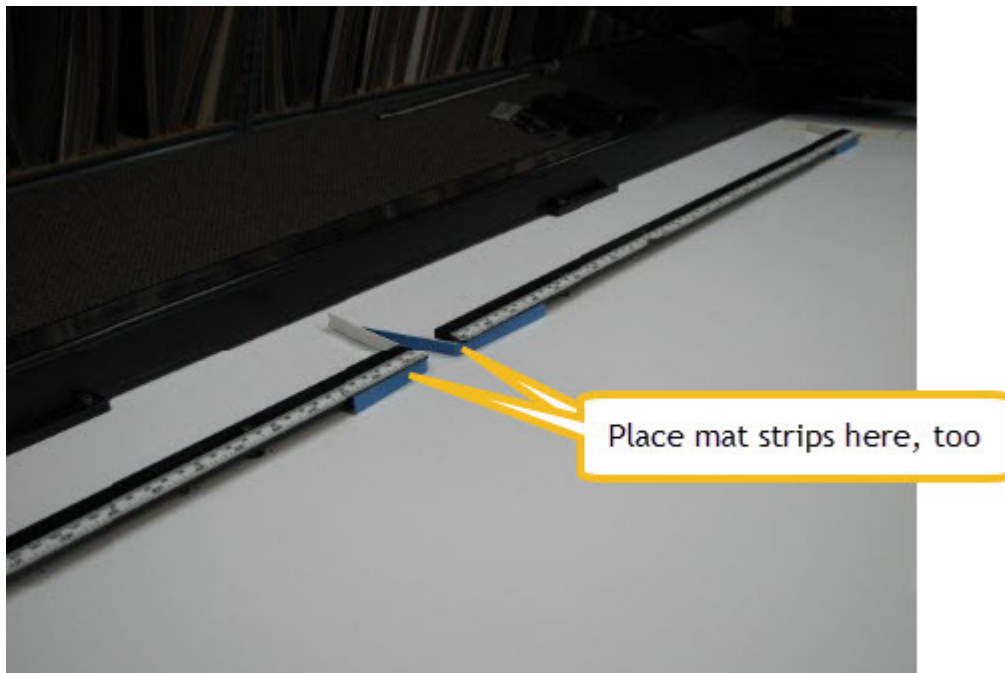
Step 3:

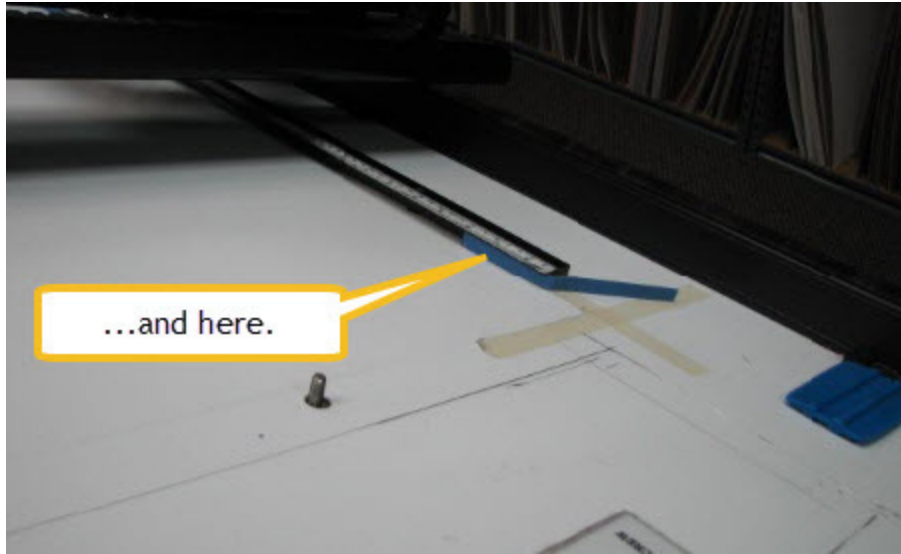
Remove the old Sintra by peeling it off from the top-right corner and cleaning off all tape residue. Use Lift-Off from Motsenbocker, available from Grainger and TrueValue. This product is far superior to Goo-Gone or Goof-Off.



Step 4:

Prepare for installing new Sintra. Mat strips should wedge in place and pull out easily.





Step 5:

Apply Heavy-duty double-sided indoor/outdoor carpet tape to the back side of the Sintra. TIP: Place tape 1/2" to 3/4" away from the edges of the Sintra that will be under the clamps, and place at the edge of the non-clamping edges.



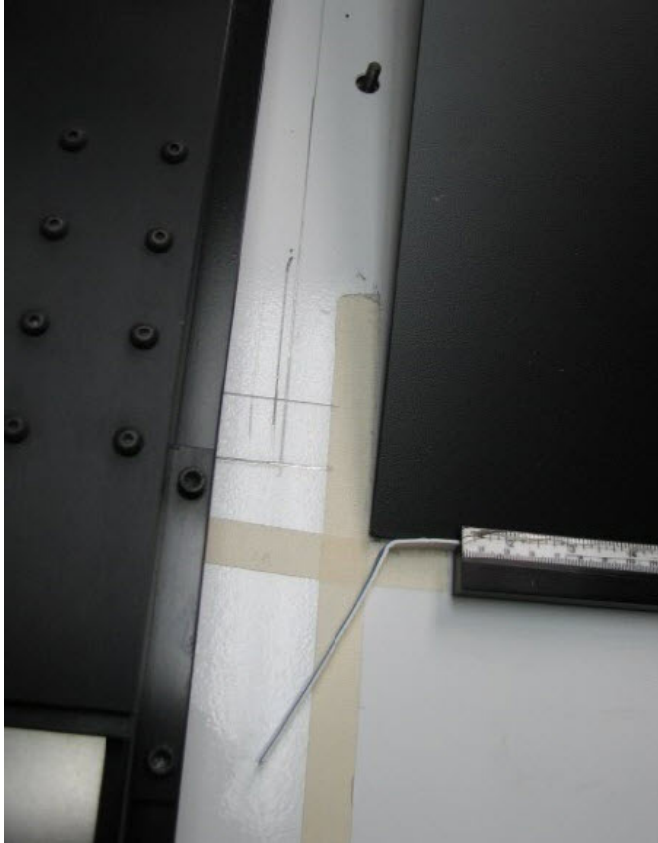
**Double-Sided  
Carpet Tape - 2"  
x 36 yds - ULINE  
- 3 Rolls  
**\$54.00**  
ULINE**

**CAUTION:** If you do not use HEAVY DUTY, aggressive, tape the Sintra will eventually slide down against the bottom clamp and prevent the clamps from operating correctly, and you will get to do this job again. The tape shown is a proven and tested product.

Step 6:

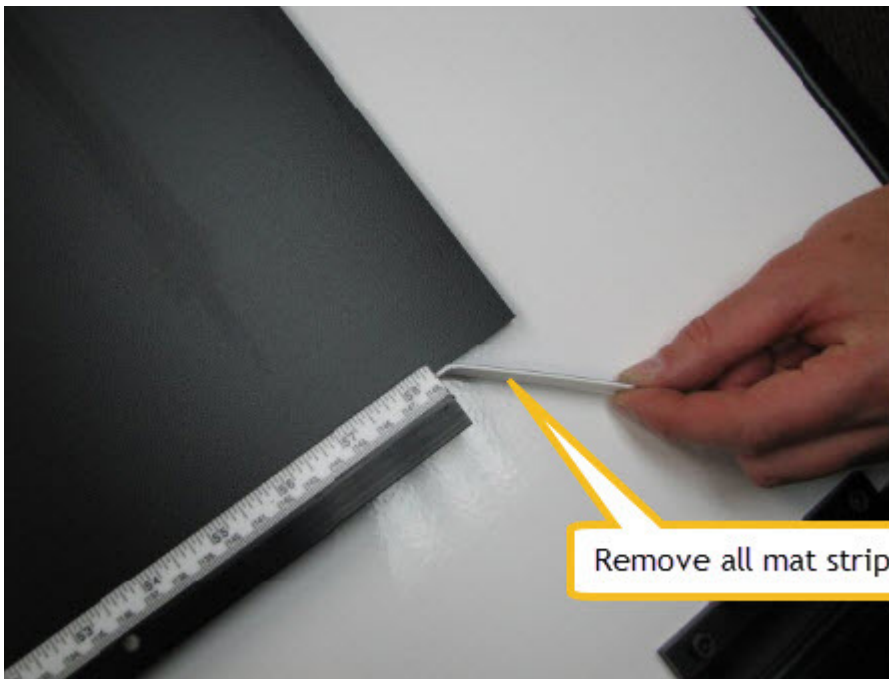
Apply the new Sintra to the cutting table.





Step 7:

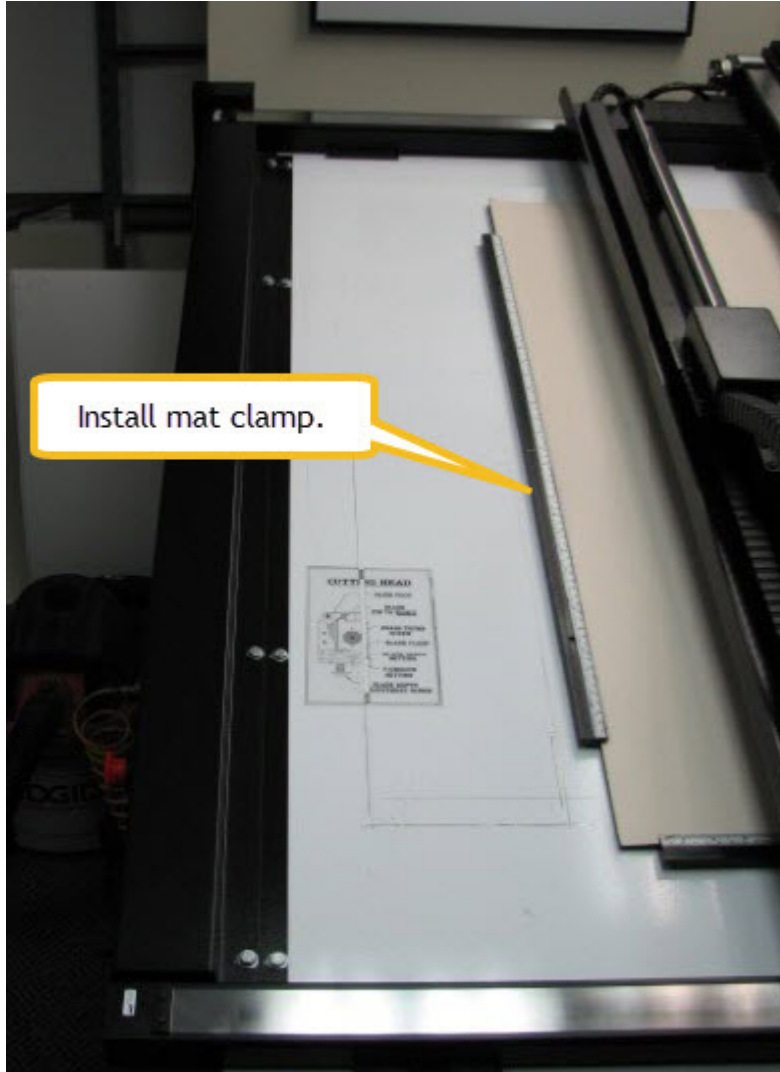
Press down on the Sintra to adhere it to the table top. Then remove all mat strips.





Step 8:

Install the vertical mat clamp. Start the threaded cylinder rods into the holes of the clamp (2 or 3 threads); then place one drop of Loctite into the threaded holes of the mat clamp and finish tightening.



You are DONE!!!!